
Responding in Faith

Session #4





Benguelé, Beatriz Milhazes ©



Women in Leadership
A MURDOCK TRUST PROGRAM



Ingênuo, Beatriz Milhazes ©



Banho de Rio, Beatriz Milhazes ©



Women in Leadership
A MURDOCK TRUST PROGRAM



Mistura Sagrada
Beatriz Milhazes ©



Women in Leadership
A MURDOCK TRUST PROGRAM

wholeness

integration

union



Women in Leadership
A MURDOCK TRUST PROGRAM

“God looked at His creation
and it was **very good.**”

Genesis 1:31



Women in Leadership
A MURDOCK TRUST PROGRAM

Wholeness:

**“When the way of our being
matches the truth of our being.”**

- *Felicia Murrell, from her book “AND”*



Women in Leadership
A MURDOCK TRUST PROGRAM

“Wholeness is never lost, it is only forgotten. Integrity rarely means that we need to add something to ourselves: It is more an undoing than a doing, a freeing ourselves from beliefs we have about who we are and ways we have been persuaded to ‘fix’ ourselves to know who we genuinely are.”

- Rachel Naomi Remen, MD

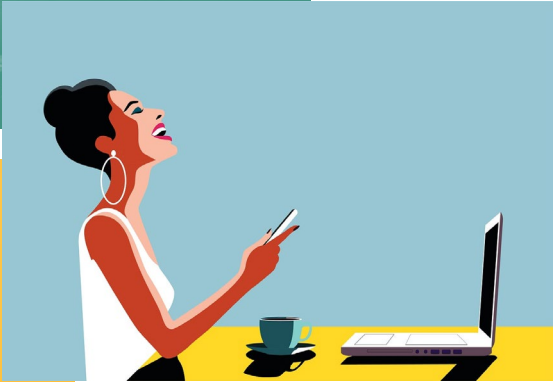


Women in Leadership
A MURDOCK TRUST PROGRAM

Thriving



Women in Leadership
A MURDOCK TRUST PROGRAM





thriving WHILE ACHING

WITH LAURIE FERGUSON PhD



Women in Leadership
A MURDOCK TRUST PROGRAM









Thriving is about **faithfully responding**
to what is happening around us
(and within us) from a place of wholeness.

- *Gaby Viesca*



Women in Leadership
A MURDOCK TRUST PROGRAM

What does thriving look like
for you in your current season?



Women in Leadership
A MURDOCK TRUST PROGRAM

What would thriving look like for you in your current season?



Benguelé, Beatriz Milhazes ©

What's your season?

What challenges are you facing?

What 'stories' have you lived by?

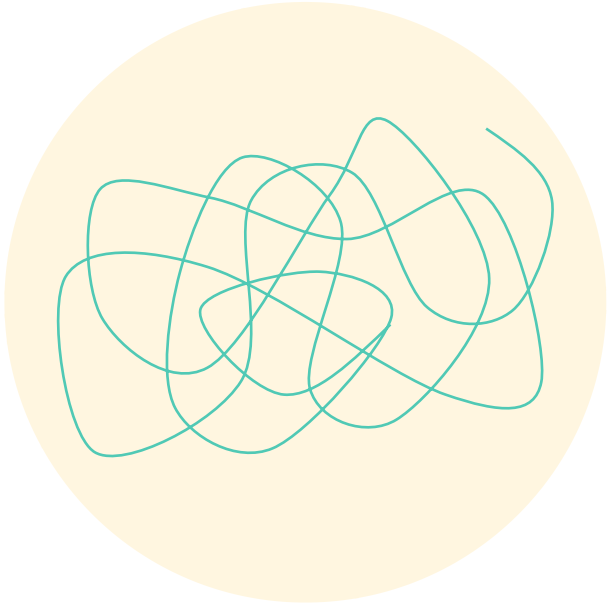
What truths are you embracing?

What is God inviting you to?

What is your *faithful response*?



You have options!





Thank you

murdocktrust.org